



Fivex
commercial
property

Carlow House Commercial Property FOR LEASE

with true character – Carlow House

34-36 Elizabeth St, Melbourne VIC 3000

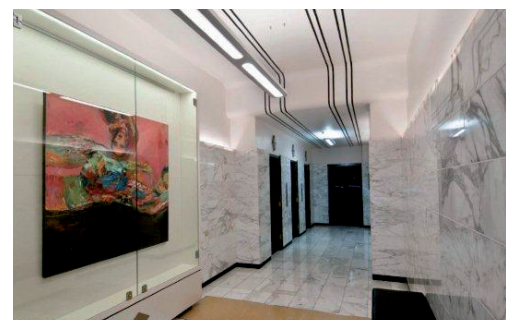
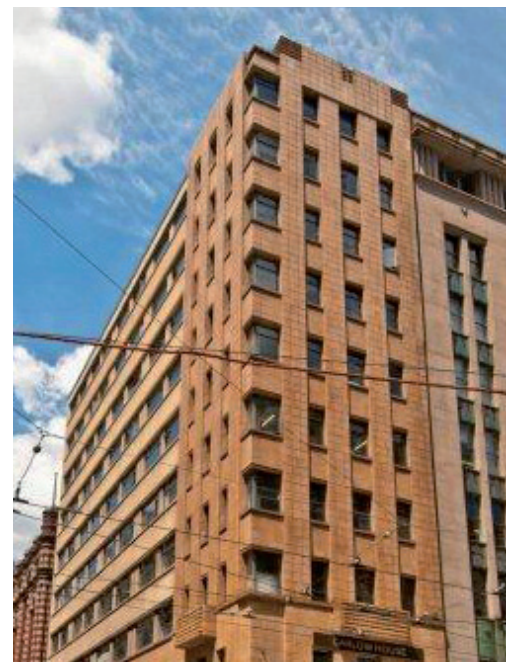
Designed in the 1930s by architect Harry Norris, and constructed in 1938, this charming heritage commercial property for lease enjoys a prestigious location on the corner of Flinders Lane and Elizabeth Street in the Melbourne CBD.

Once home to rag-traders, Carlow House is now a hub for artists, web designers, publishers, innovative businesses and architects. Businesses currently leasing this commercial office space include evening wear and special-occasion specialist Linda Britten, Schwartz Publishing, Marcos Davidson jewellers, Nicky Hepburn and Anna Davern, and other interior designers.

The commercial office building is close to public transport, office and retail precincts, galleries, night life and entertainment.

Features of this commercial property for lease include:

- ✓ A choice of small-scale office spaces, ranging from 20sqm to 371sqm, which are ideal for small, independent businesses..
- ✓ Modern interior and office spaces with historical detailing.
- ✓ Excellent natural light and windows which open to let in fresh air.
- ✓ Sought-after Melbourne location making it ideal for commercial lease.
- ✓ Carlow House has an impressive facade on Elizabeth Street, which forms a tower-like structure which stretches down Flinders Lane.



CONTACT US: p. +61 2 8920 1233 e. rentals@fivex.com.au